
Addendum to PsiLog User Guide

Printed User Guide: V1.12F
Addendum: V1.19F

Introduction

This Addendum documents the changes made to the PsiLog package since the V1.12F User Guide was printed.

Important!

V1.15F introduced major changes to the way PsiLog is installed. See *Installing PsiLog – New Instructions* on page 5 of this Addendum for more information.

Summary of Changes

The changes made to each version of the PsiLog software are detailed below.

V1.18F to V1.19F

- Fixed some PsiLog Link connection problems.
 - Fixed “Corrupt Scheme” message when unloading.
-

V1.17F to V1.18F

- Fixed support for 5 minute scan intervals.
-

V1.16F to V1.17F

- Fixed memory corruption error involving the Formula Tester.
-

V1.15F to V1.16F

- Added 38400 to the baud rates PsiLog Link supports.
- Fixed some minor user interface glitches.
- Updated install system:
 - Fixed some uninstall problems.
 - Windows 3.x is no longer supported.
 - Can now select which components to install.

V1.14F to V1.15F

- Improved installation sequence – The installation sequence has been enhanced to use a Windows install program. Support for DOS-only computers has been dropped. Contact Southern Cross Software Solutions if you need PsiLog to work with a DOS-only computer. The new documentation for installing PsiLog can be found below under *Installing PsiLog – New Instructions* on page 5 of this Addendum.
- Scheme searching added to Modem dialog – The Modem dialog (for dialling out and hanging up) now searches all local disks (Internal, A, and B) looking for schemes with telephone numbers.
- Fixed “Panic 73” putting DWLR loggers to sleep.
- Fixed bug preventing Macro loggers from being programmed.

V1.13F to V1.14F

- DWLR Loggers – Support for data loggers that use extremely long scan intervals has been added. Currently, the Model 8007WDP is the only such logger. When communicating with these loggers it is recommended the Timeout Communications preference be set to 100 (10 seconds).
- PsiLog now searches for scheme files – When PsiLog automatically identifies the scheme in a data logger when using the Scheme Test Display or Data Viewer Logger Buffer Display functions, it now searches all local disks looking for the required scheme files.
- Fixed “Divide by 0” error in Velocity Trace.
- Fixed some “Panics” (crashes) introduced in V1.13F.

V1.12F to V1.13F

- Multidrop Communications – Support for multidrop communications has been added. This is a special communications mode supported by recent models of Unidata data loggers. It allows multiple data loggers to be connected to a single serial port. However, extra hardware is needed to enable all the serial ports to be electrically connected together. Contact your Unidata office or representative for more information.
- Enhanced scheme selection – When programming a logger or deleting a scheme, PsiLog will now search all local disks for schemes. For example, if your Schemes Directory preference is STARLOG\ on Internal, PsiLog will actually search the STARLOG\ directories on Internal, A, and B disks, if they exist. It doesn't matter if disks A or B don't exist. Schemes found on the A or B disks will have [A] or [B], respectively, appended to their names so you'll know where PsiLog found them.
- Enhanced Mode Selection window – The Mode Selection window (see page 32 in the User Guide) now allows the use of the Arrow keys to move the bold

highlight. When it's on the mode you want, simply press Enter to select that mode.

- Fixed "File not found" error programming schemes that don't have a KBD file.

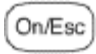




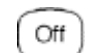
Additions to the PsiLog User Guide



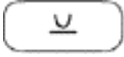
Since no documentation is provided with Workabout computers, the following sections "The Keyboard", "Special Key Combinations" and "Battery Status" provide basic instructions on operating Workabout computers. They should be read as if they were inserted above the heading "Serial connections" on page 5 of the User Guide.

The Keyboard

The Workabout keyboard is an alpha-numeric style, there being not enough space for a conventional QWERTY-style keyboard.

The keys all work as expected, most parallel those found on a regular computer keyboard. Some of the keys are unique to the Workabout or have special uses. They are explained below:

	Turns the Workabout on, and doubles as the Escape key. As usual on PCs, the Escape key is used to cancel dialog boxes. Shift-Esc displays the on-line help.
	The same as the Tab key on a PC. The Workabout uses the Tab key to expand choice lists in dialog boxes for easier selection, and to open sub-dialog boxes with extra options.
	The Menu key displays the application's menus. To make the most of the limited screen space, menus are hidden until they are needed.
	The Contrast key. Press to increase the screen contrast. Hold down the Shift key and press to decrease the contrast. The Workabout has a temperature compensating display and the contrast will need only minor (if any) changes when moving between an air-conditioned office or car and the outdoors.
	The Backlight key. Press to toggle the screen backlight on and off.
	Turns the Workabout off. The Workabout may be switched off at any time without loss of data. Turn the Workabout back on and everything will be as it was before it was turned off. The Workabout does not have a 'shutdown' procedure, and in fact it is not expected to ever need to be reset.

	Deletes the character to the left of the cursor, the same as the Backspace key on PCs. If the Shift key is held down it deletes the character to the right of the cursor, the same as the Delete key on PCs.
	The same as the Enter key on PCs. It is the key used to accept menu selections and to OK dialog boxes.
	The Psi on key. This corresponds to the Alt key on PCs. Holding this key down at the same time as pressing a letter key activates many functions. Some functions require the Shift key to be held down as well.

Special Key Combinations

The Psi on key has many special combinations. Some of the more important ones are outlined below:

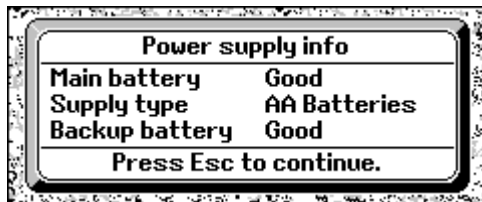
Psi on-Up Arrow	The Page Up (PgUp) key.
Psi on-Down Arrow	The Page Down (PgDn) key.
Psi on-Left Arrow	The Home key.
Psi on-Right Arrow	The End key.
Psi on-Menu	Temporarily displays the full-size status bar. Has no effect if the full-size status bar is already visible.
Psi on-Space	Toggles Caps Lock.
Psi on-Ctrl -Shift-K	Kills (exits) the currently running program without saving any data.
Psi on-Ctrl -Del	Soft reset. Exits all running programs (without them saving any data) and restarts the Workabout without clearing the Internal RAM disk.
Psi on-Ctrl -Shift-Del	Hard reset. Clears all memory. This includes all running programs and the entire Internal RAM disk.

The Psi on and Ctrl keys have a coloured line above them. Other keys have a similarly coloured character or function above them. Pressing the Psi on or Ctrl key at the same time as pressing one of these labelled keys, will result in the corresponding character or function being pressed.

For example, the English language (UK model) Workabout has a yellow line above the Psi on key. The 8 and 9 keys have yellow square brackets [and] respectively). Pressing Psi on-8 will cause the [character to be entered, Psi on-9 the] character.

Battery Status

The Workabout is able to display the state of its batteries at all times. Press Ctrl -Shi ft-B at any time to display the Power Supply Info dialog:



Installing PsiLog – New Instructions

Starting with V1.15F, PsiLog now installs under Microsoft Windows™ 95 and later only. The sections in the User Guide headed *Starting the installation under Windows 3.x*, *Installing under DOS* and *Installing Link software on your PC* on pages 12 and 17-23 should be ignored. Those parts of the User Guide referring to using the Link software on pages 26-29, 40, 43, 50-52 and 61 should be ignored too. Refer to *How to use the Link software* on page 15 of this Addendum instead.

The following instructions replace those found on pages 11-23 in the User Guide.

Installing PsiLog

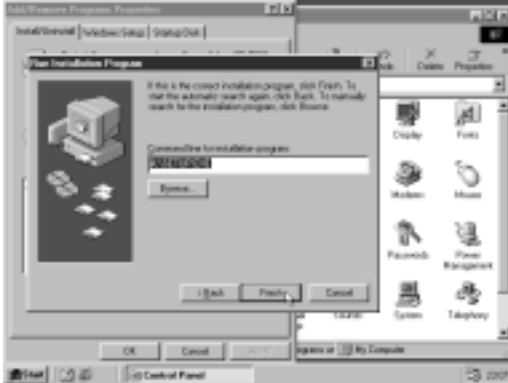
PsiLog installs on any IBM-PC compatible computer running any version of Microsoft Windows 95 or later (this includes Windows 98, NT 4, 2000, ME or XP). Install files for MS-DOS or Window 3.x are only available via email. Contact SCSS directly for more information.

Follow the instructions below to install PsiLog:

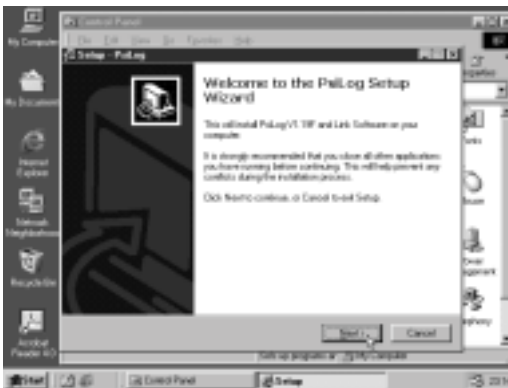
1. Put the PsiLog installation disk into your PC's floppy disk drive.
2. Open the Control Panel (Start→Settings→Control Panel):

If you're using Windows 2000 or XP it's a little different. Click on the Add/Remove Programs button on the left and then the CD or Floppy button on the right.

5. Click on the Next> button and Windows will search for the PsiLog setup program. It should find it on the PsiLog Install disk you inserted:



6. Click on the Finish button to start the PsiLog install program. After a few seconds your PC screen should show the setup welcome screen:



Press Enter or click on Next>.

7. Connect your Psion to your PC using an appropriate serial cable. If you're not sure how to do this, see *Serial connections* on page 5 of the User Guide and *Serial*

communications on page 78 of the User Guide for more information.

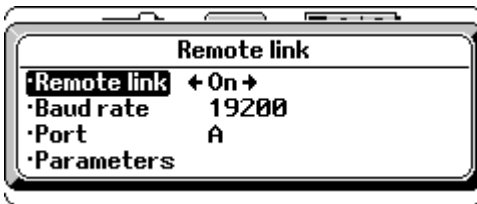
8. Turn on your Psion and activate its Link. You will need to use the System screen to do this. Select System screen from the Special menu:



Then select Remote Link from the Spec menu:



9. Set the Remote Link to On, the Baud rate to 19200 and the Port to A (only Workabout computers have a Port option). Press Enter to activate the Link.



10. Go back to your PC and continue the setup there. The information screen shown paraphrases these instructions. You can read it, but this User Guide should provide a clearer explanation.



The PsiLog Link component is required for PsiLog to be able to transfer files to and from your PC. If you happen to have some other software installed, such as PsiWin, you can use that instead. You can still install PsiLog Link, though.

The PsiLog User Guide is in Adobe Acrobat PDF format. To read it you must have either the full version of Acrobat installed, or the free Acrobat Reader. Acrobat Reader is too big to fit on the PsiLog floppy disk. You can download it from Adobe's website. The Internet address is:

<http://www.adobe.com/products/acrobat/readstep.html>

Make sure the components you want to install are ticked, then press Enter or click on Next > to continue.

- 13. You will now be asked to select the Start menu folder for the PsiLog icons:



It defaults to Psi Log, but if you want a different name just type it in. Press Enter or click on Next> to continue.

- 14. The next installation step lets you create extra icons for starting PsiLog Link. If you decided not to install PsiLog Link you won't see this screen; skip ahead to step 15.

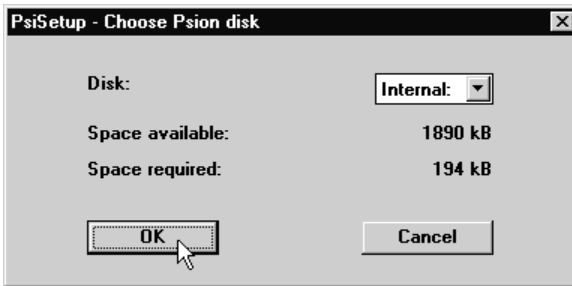


- 15. PsiLog is now ready to install. Just press Enter or click on Install to continue.
- 16. If you elected to install PsiLog on your Workabout, after installing the PsiLog files for your PC the setup program will immediately proceed to installing the PsiLog files onto your Psion.



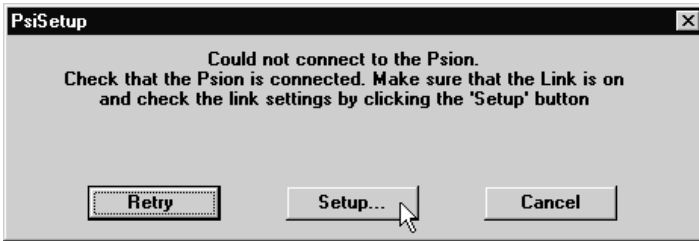
- 17. **If a connection is established** with your Psion a message Reading device information from the Psion will be shown. You may

also see a message Copying communication system files to the Psion. Eventually, a window similar to the following will appear:

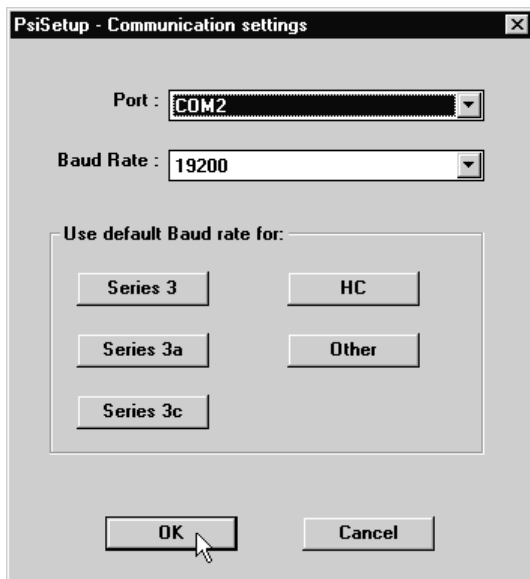


Proceed to step 18.

If there is a problem communicating with your Psion, the following window will appear:



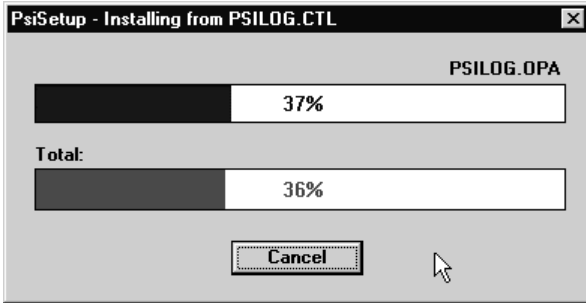
Click on Setup. The following dialog will appear:



First check the Port setting. Many computers are configured with a serial mouse on COM1, so COM2 may need to be selected. Next, select the Baud Rate. The baud rate suggested above in step 7 was 19200. If you have one of the Psion computers mentioned on the buttons, press that button to select the baud rate. The 'Other' model is suitable for Workabout computers. In all cases the Baud Rate must match that being used by your Psion. Click on OK and then Retry. The window shown at the beginning of this step should appear.

If problems persist, check your cabling and COM port on the PC. Make sure no other Windows programs are running that might be using the COM port. Common programs to check for are Internet diallers and fax systems. See also the *Troubleshooting* starting on page 77 of the User Guide.

18. Select the Disk you want to install PsiLog to and press OK. SCSS recommends you install PsiLog on the Internal RAM disk. Make a note of the disk you select for later reference. The following window will appear showing the progress of the installation:



19. When complete, the following window will appear:

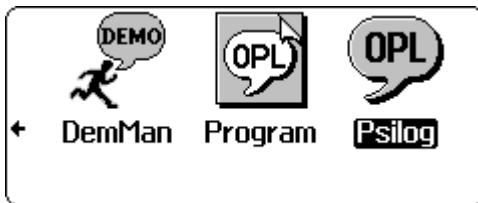


Press Enter or click on OK. The transfer from your PC is complete.

20. You can now turn off the Link on your Psion. Select Remote Link and set it to Off.

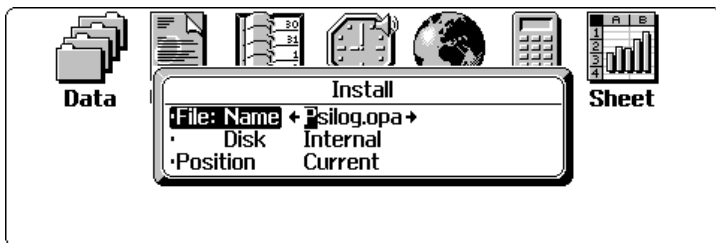


21. PsiLog will now appear under the "Run OPL" icon:

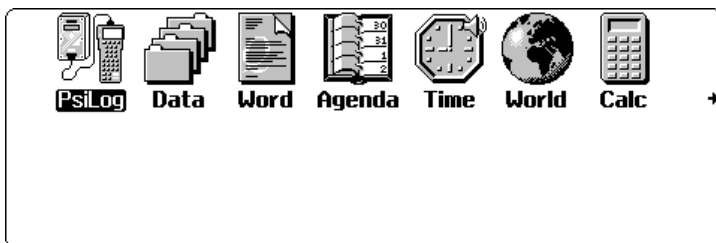


22. If you are using a non-Workabout Psion computer, you can install PsiLog as its own icon in the System screen. Press Psi on-I, select the Disk you

copied PsiLog to (the disk you selected in step 11), then in the Name field type in Psi Log and press Enter:

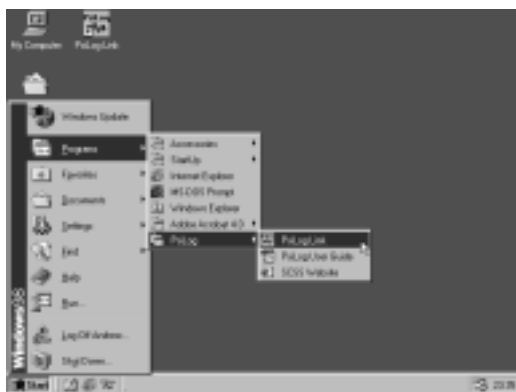


PsiLog will appear as an icon:

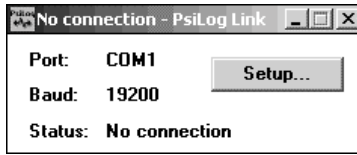


How to use the Link software

You start the PsiLog Link software much like any other program on your PC. Click on the Start button, select Programs, the group you selected to install the Link software into (the default is PsiLog), and then click on "PsiLog Link".



The Link software will start running:



It will just sit there waiting for PsiLog on your Psion to connect to it. Simply make sure Port is correct and Baud matches the PsiLog settings under Remote link preferences. Your Psion and your PC will have to be connected using a suitable cable.

If the status shows COM port in use, then another program is using the serial port. If the Port setting is correct you will have to determine which program is using the serial port and exit it. You will then have to either exit and restart PsiLog Link, or click on the Setup... button and click OK.

When you've finished transferring files, simply close PsiLog Link.

Selecting the Link baud rate

Ideally, the Baud setting should be the fastest possible. This depends on two things: the model of your Psion, and the link server software you are using on your PC. The table below lists the maximum baud rates for Psion and Link software packages. Look up your Psion and your Link server software and use the smaller of the two baud rates. Note that PsiLog comes with the PsiLog Link software.

Psion		Link server software	
Model	Baud rate	Name	Baud rate
Workabout-mx	115200	PsiLog Link <i>(This comes with PsiLog)</i>	57600
Workabout	19200	Epoc Connect	115200
Series 3mx	115200	PsiWin v2.x	115200
Series 3c	57600	PsiWin v1.x	57600
Series 3a	19200	RCOM	57600
Siena	19200	MCLINK	19200
		SLINK	19200

If you are unsure, select 19200 baud as all computers and software packages will work at that baud rate. Make sure your Psion and Link software are configured to use the same baud rates.

If you seem to be having trouble getting a connection, try 19200 baud first and increasing the baud rate if that works, or decreasing it if it doesn't. See the *Troubleshooting* section starting on page 81 of the User Guide if you can't get the Link software to work.

Selecting the correct PDL directory

The PDL directory setting of the Remote link preferences dialog must be set to refer to the directory in which your Unidata software is installed.

By default, the Unidata Starlog software package installs to the C: \STARLOG\ directory, the Unidata Starflow software package to C: \STARFLOW\. During the installation of these packages you are given the option of changing these default locations. Whichever package you have, it is critical that PsiLog is set to refer to the directory it has been installed to, otherwise you won't be able to transfer schemes to the Workabout, nor transfer unloaded data to your PC.

By default, the PDL directory setting in PsiLog is REM: : C: \STARLOG\. The REM: : part is very important as it specifies the Unidata software is installed on a computer remote from the Workabout. The C: \STARLOG\ part specifies the default directory the Unidata Starlog software is installed to on your PC.

If you are using the Unidata Starflow software package, or you installed your Unidata software into a directory other than the default, then you **must** change the PDL directory setting to refer to the correct directory on your PC. Remember to include the beginning REM: : .

For example, if you are using the Unidata Starflow software package and installed it to the default C: \STARFLOW\ directory, you must set the PDL directory setting to REM: : C: \STARFLOW\.

